

## ARTIGO / ARTÍCULO / ARTICLE

*Cryptorhopalum calvum* sp. nov., a new species from the Neotropical Region (Coleoptera: Dermestidae: Megatominiæ).Jiří Háva<sup>1</sup>, Andreas Herrmann<sup>2</sup> & Marcin Kadej<sup>3</sup>

<sup>1</sup> Department of Forest Protection and Entomology, Faculty of Forestry and Wood Sciences, Czech University of Life Sciences, Kamýcká 1176, CZ-165 21, Prague 6 - Suchbát, Czech Republic.  
e-mail: jh.dermestidae@volny.cz

<sup>2</sup> Bremervörder Strasse 123, D-21682 Stade, Germany. e-mail: herrmann@coleopterologie.de

<sup>3</sup> Department of Invertebrate Biology, Evolution and Conservation, Institute of Environmental Biology, Faculty of Biological Science, University of Wrocław, Przybyszewskiego 63/77, 51-148 Wrocław, Poland.  
e-mail: entomol@biol.uni.wroc.pl

**Abstract:** *Cryptorhopalum calvum* sp. nov. from Brazil, Ecuador, French Guiana and Peru (Coleoptera: Dermestidae) is described, illustrated and compared with similar species.

**Key words:** Coleoptera, Dermestidae, *Cryptorhopalum*, new species, description, Taxonomy, Brazil, Ecuador, French Guiana, Peru.

**Resumen:** *Cryptorhopalum calvum* sp. nov., una nueva especie de la Región Neotropical (Coleoptera: Dermestidae: Megatominiæ). Se describe e ilustra una nueva especie de la Región Neotropical, *Cryptorhopalum calvum* sp. nov. (Coleoptera: Dermestidae: Megatominiæ), y se compara con especies similares.

**Palabras clave:** Coleoptera, Dermestidae, *Cryptorhopalum*, nueva especie, descripción, Taxonomía, Brasil, Ecuador, Guyana Francesa, Perú.

Recibido: 31 de marzo de 2015

Aceptado: 7 de abril de 2015

Publicado on-line: 18 de abril de 2015

urn:lsid:zoobank.org:pub:6F18744B-9741-4403-A90C-865306C31878

## Introduction

The genus *Cryptorhopalum* Guérin-Ménéville, 1838 currently contains 161 species distributed in the Holarctic and Neotropical Regions (Herrmann et al. 2014, 2015; Háva 2015a, b). In the present article the authors describe a new species collected in Peru, Ecuador, Brazil and French Guiana.

## Material and methods

The following abbreviations of measurements were used:

Total length (TL) - linear distance from anterior margin of pronotum to apex of elytra.

Pronotal length (PL) - maximum length measured from anterior margin to posterior margin of the pronotum.

Pronotal width (PW) - maximum linear distance between lateral margins.

Elytral length (EL) - linear distance from shoulder to apex of elytron.

Elytral width (EW) - maximum linear transverse distance.

Abbreviations of collections:

AHEC: Private collection of Andreas Herrmann, Stade, Germany.

DIBEC: Department of Invertebrate Biology, Evolution and Conservation, Institute of Environmental Biology, Faculty of Biological Science, University of Wrocław, Wrocław, Poland.

JHAC: Jiří Háva, Private Entomological Laboratory & Collection, Únětice u Prahy, Prague-west, Czech Republic.

MZLU: Museum of Zoology, Lund University, Lund, Sweden.

ZSMC: Zoologische Staatssammlung, München, Germany.

The specimens of the described species are provided with a red, printed label showing the following text: "HOLOTYPE, [PARATYPE respectively] *Cryptorhopalum calvum* sp. n., J. Háva, A. Herrmann & M. Kadej det. 2015".

## Description

### *Cryptorhopalum calvum* sp. nov. (Figs. 1-7, Map 1)

**Type material. Holotype:** (♂) labelled: "Brasilien / Amazonas, Mission Cabuauri am Canal Maturacà (70m), 16.I.1963, C. Lindemann", (ZSMC). **Paratypes:** (1♂): "Peru, Loreto Iquitos, Barillal, 10.11.1984, leg. L. Huggert", (JHAC); (1 female): "Peru, Junin, Satipo, 19.1.1984, leg. L. Huggert", (MZLU); (1♀): "Peru, Huanucu, Tocache, 2.2.1984, leg. L. Huggert", (MZLU); (1♀): Peru, Prov. Huánuco, Río Lullapichis, Stat Panguana, 9°37'S, 74°56'W, 233m, 22.11.-14.12.08, leg. F. Wachtel, (AHEC); (1♀): "Ecuador, Napo, Yuca 30 km E Coca, 6.3.1983, leg. L. Huggert", (JHAC); (1♀): French Guiana, Nouragues, Inselberg Camp, 4°05'N, 52°41'W, 22.IX.2010, leg. S.E.A.G., (AHEC); (1♀): the same data but 8.X.2010, (AHEC); (1♂, 1♀): the same data but 9.XI.2010, (AHEC); (2♀): F. Guiana, Saül, Point de vue du Belvédère, FIT 1,5m, 3°1'22"N, 53°12'34"O, 07.III.2011, leg. S.E.A.G., (AHEC); (1♀): GUF Str., Regina > Saint-George, N 04 86, W 52 105, 40m, 9.-19.Feb. 2013 (8942), leg. A. Puchner, (AHEC); (4 spec.): Brasilien, Tapurucouara am Rio Negro / Amazonas, 4.II.1963, C. Lindemann (3 spec. ZSMC, 1 spec. DIBEC); (3 spec.): Brasilien, Tapurucouara am Rio Negro / Amazonas, 2.II.1963, C. Lindemann; (12 spec.): Brasilien / Amazonas, Mission Cabuauri am Canal Maturacà (70m), 16.I.1963, C. Lindemann (8 spec. ZSMC, 4 spec. DIBEC); (4 spec.): Brasilien / Amazonas, Mission Cabuauri am Canal Maturacà, 24.II-4.III.64, Chr. Lindemann (ZSMC); (1 spec.): Brasilien/Amazonas, Mission Cabuauri am Canal Maturacà (70m), 29.II.64, C. Lindemann (ZSMC); (1♀): French Guiana, Nouragues, Petit Plateau, 2.IX.2010, leg. S.E.A.G., (AHEC); (1♀): Peru, Loreto, vicinity of Picuroyacu, 150m, 20.X.2006, leg. R. Westerduijn, (AHEC).

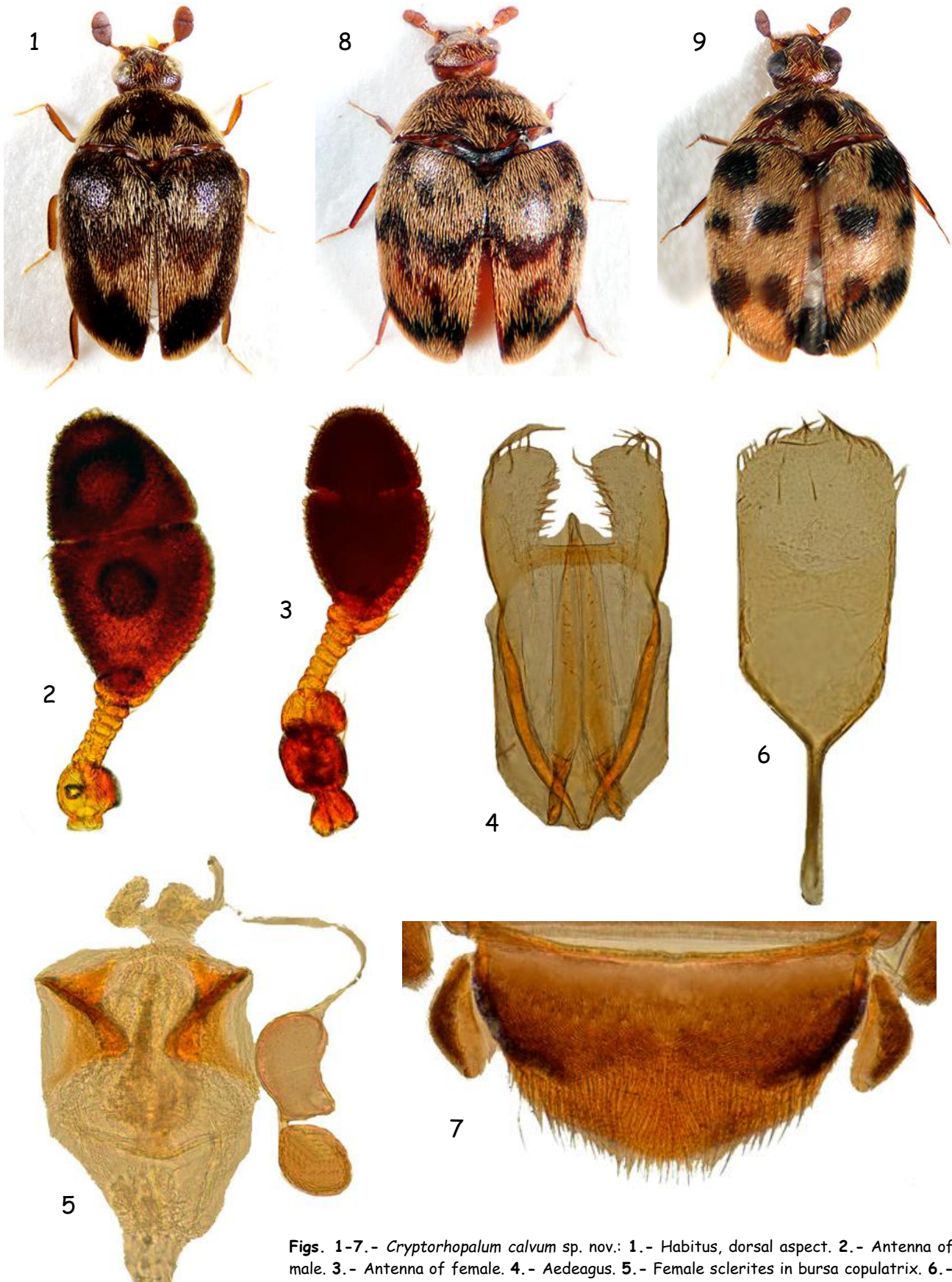
**Etymology.** Latin adjective calva (-um) = skull, named according to skull ornament on elytrae.

### Description.

**Male:** Small and oval (Fig. 1). Measurements (in mm): TL 2.3, PL 0.7, PW 1.4, EL 1.8, EW 1.6. Whole integument dark brown with a very slight metallic shine. Head dense and coarsely punctated, covered by short, recumbent, yellow setation. Median frontal ocellus present. Eyes large with any visible microseta. Maxillary palpi yellow, labial palpi light brown. Antennae with 11 antennomeres, antennal club with 3 antennomeres (Fig. 2), yellow and brown, antennomeres I-II, IX-XI brown, antennomeres III-VIII yellow. Pronotum finely and sparsely punctated; covered by long, recumbent, yellow and brown setation; brown setation forming large discal spot. Elytra with deep and coarse punctuation, humera with small bump, covered by brown and yellow, recumbent setation; yellow setation forming ornament (Fig. 1). Epipleuron brown with yellow setation. The small triangular scutellum naked and without punctuation. Abdominal visible ventrites densely and coarsely punctated, darks brown, with yellow recumbent setation. Ventricle IX (Fig. 6). Pygidium (Fig. 7). Legs brown, with yellow setae. Aedeagus as in Fig. 4.

**Female:** Similar to male, but the antennal club smaller (Fig. 3). Sclerites in bursa copulatrix Fig. 5.

**Variability.** Body measurements (in mm): TL 1.8-2.4, EW 1.2-1.6.



**Figs. 1-7.-** *Cryptorhopalum calvum* sp. nov.: 1.- Habitus, dorsal aspect. 2.- Antenna of male. 3.- Antenna of female. 4.- Aedeagus. 5.- Female sclerites in bursa copulatrix. 6.- Ventrite IX. 7.- Pygidium.  
**8.-** Habitus, dorsal aspect of *C. brulei* Herrmann & Háva, 2011.  
**9.-** Habitus, dorsal aspect of *C. panthera* Herrmann, Háva & Kadej, 2014.

**Diagnosis.** The new species belongs to the "*C. quadrimaculatum* species group" and resembles very much to the species *Cryptorhopalum brulei* Herrmann & Háva, 2011 (French Guiana) (Fig. 8) and *Cryptorhopalum panthera* Herrmann, Háva & Kadej, 2014 (French Guiana) (Fig. 9), but differs from them in the colour arrangement of elytral and pronotal patterns, shape of antennae, male genitalia and sclerites in bursa copulatrix.

**Distribution.** Brazil, Ecuador, French Guiana, Peru (Map 1).

## Acknowledgements

This research was supported by the Internal Grant Agency (B0118/004) Faculty of Forestry and Wood Sciences, Czech University of Life Sciences Prague.

## References

Háva, J. 2015a. *World Catalogue of Insects. Volume 13. Dermestidae (Coleoptera)*. Leiden/Boston: Brill, xxvi + 419 pp.

Háva, J. 2015b. *Cryptorhopalum sharpi* sp. nov., a new species from Ecuador (Coleoptera: Dermestidae: Megatominae). *Arquivos Entomolóxicos* **13**: 213-214.

Herrmann, A.; Háva, J. & Kadej, M. 2014. *Cryptorhopalum panthera* sp. nov., a new species from French Guiana (Coleoptera: Dermestidae: Megatomini). *Arquivos Entomolóxicos* **10**: 189-192.

Herrmann, A.; Háva, J. & Kadej, M. 2015. New Dermestidae (Coleoptera: Bostrichoidea) from Peru. *Arquivos Entomolóxicos* **13**: 67-74.



Map 1. - Distributional map of *Cryptorhopalum calvum* sp. nov.