

ARTIGO / ARTÍCULO / ARTICLE

Three new species of *Orphinus* Motschulsky, 1858 from Thailand
(Coleoptera: Dermestidae: Megatominae).

Jiří Háva

Department of Forest Protection and Entomology, Faculty of Forestry and Wood Sciences,
Czech University of Life Sciences, Kamýcká 1176, CZ-165 21, Prague 6 - Suchbát, Czech Republic.
e-mail: jh.dermestidae@volny.cz

Abstract: The species *Orphinus (Orphinus) schneideri* sp. nov., *Orphinus (Orphinus) prudeki* sp. nov., and *Orphinus (Orphinus) rihai* sp. nov. (Coleoptera: Dermestidae: Megatominae), all from Thailand, are described, illustrated and compared with similar species.

Key words: Coleoptera, Dermestidae, Megatominae, *Orphinus*, taxonomy, new species, Thailand.

Resumen: Tres nuevas especies de *Orphinus* Motschulsky, 1858 de Tailandia (Coleoptera: Dermestidae: Megatominae). Se describen las especies *Orphinus (Orphinus) schneideri* sp. nov., *Orphinus (Orphinus) prudeki* sp. nov. y *Orphinus (Orphinus) rihai* sp. nov. (Coleoptera: Dermestidae: Megatominae), todas de Tailandia, y se ilustran y comparan con especies similares.

Palabras clave: Coleoptera, Dermestidae, Megatominae, *Orphinus*, taxonomía, nuevas especies, Tailandia.

Recibido: 21 de febrero de 2015

Aceptado: 28 de febrero de 2015

Publicado on-line: 10 de marzo de 2015

urn:lsid:zoobank.org:pub:CAC36EB3-ED7D-4F31-B40E-259FF7B68109

Introduction

The dermestid genus *Orphinus* Motschulsky, 1858 currently contains 93 species worldwide, being known six species from Thailand (Háva 2015). In the present article are described three new species collected by Czech entomologists in Thailand. The article is a continuation of a series of previous articles about *Orphinus* species from Thailand (Háva 2012, Kitano 2013, Kitano & Háva 2013, Herrmann & Háva 2014, Háva & Kadej 2014).

Material and methods

The following measurements were made:

total length (TL) - linear distance from anterior margin of pronotum to apex of elytra.
elytral width (EW) - maximum linear transverse distance.

Specimens of the presently described species are provided with red, printed label with the text as follows: "HOLOTYPE [or PARATYPE, respectively] name of taxon sp. nov. Jiří Háva det. 2015".

All the material is deposited in collection of Jiří Háva, Private Entomological Laboratory & Collection, Únětice u Prahy, Prague-west, Czech Republic (JHAC).

Results

Subfamily Megatominae

Tribe Megatomini

Genus *Orphinus* Motschulsky, 1858

Orphinus (Orphinus) fulvipes (Guérin-Méneville, 1838)

Material examined: NW Thailand, Chiang Mai prov., Ban San Pakia, 1700 m, 25.IV.-7.V.1996, Sv. Bílý leg., 1 spec., J. Háva det., (JHAC).

Distribution: Cosmopolitan species (Háva 2015). New locality data from Thailand.

Orphinus (Orphinus) schneideri sp. nov. (Figs. 1-2)

Type material. Holotype (♀): Thailand NW, Mae Hong Son, 1000 m, 16-23.VI.1993, J. Schneider lgt., (JHAC).

Description.

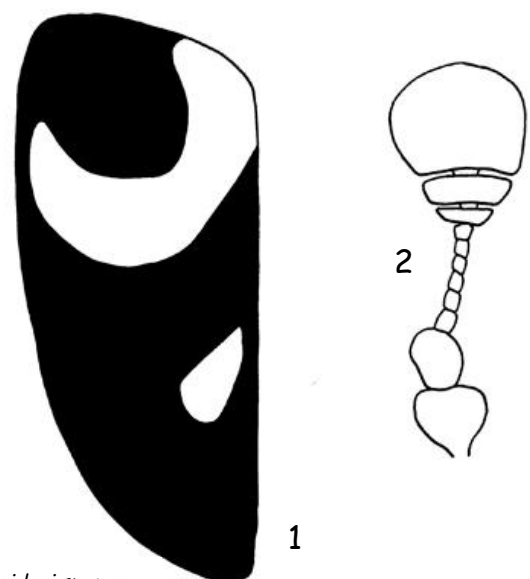
Female. Body small, oval, TL 2.3 mm, EW 1.5 mm. Head and pronotum brown, each elytron brown with two light brownish-orange patterns (Fig. 1), brown on venter. Head coarsely punctate with long, recumbent, yellow setation. Palpi brown; setation on mentum denser. Eyes large, with brown microsetae. Ocellus on front present. Antennae light brown with yellow setae, with 11 antennomeres, antennal club with 2 antennomeres, terminal antennal segment larger than the 10th antennomere, circular (Fig. 2). Pronotum brown, disc finely punctate, densely foveolate posteriorly, with long, recumbent, yellow setae. Scutellum brown, triangular, without setation. Elytra finely punctate; humerus with one small bump; elytral surface with long, recumbent brown setation; cuticle brown with two light brownish-orange patterns covered by long, recumbent, yellow setation. Epipleuron brown, anteriorly broad, finely punctate, with short, yellow setation. Legs light brown with yellow setation. Mesosternum coarsely punctate laterally, otherwise finely punctate, covered by long, recumbent, yellow setation. Abdominal visible ventrites brown, with short, recumbent, yellow setation.

Male. Unknown.

Differential diagnosis. The new species differs from other known species according to its characteristic elytral brownish-orange patterns. It's similar to *O. (O.) horaki* Kitano & Háva, 2013 but differs from it by the elytral patterns, as in *O. horaki* each elytron has one transverse orange-reddish fascia in its anterior half and one orange-reddish spot on the sutura near apex.

Etymology. Patronymy, dedicated to its collector, my friend Jan Schneider (Prague, Czech Republic).

Distribution. Thailand: Mae Hong Son province.



Figs. 1-2.- *Orphinus (Orphinus) schneideri* sp. nov.
1.- Elytron. 2.- Antenna of female.

Orphinus (Orphinus) prudeki sp. nov. (Figs. 3-5)

Type material. Holotype (♂): Thailand, Nan prov., Doi Phuka Nat. Park, 28.IV.-12.V.2002, P. Průdek leg., (JHAC).

Description.

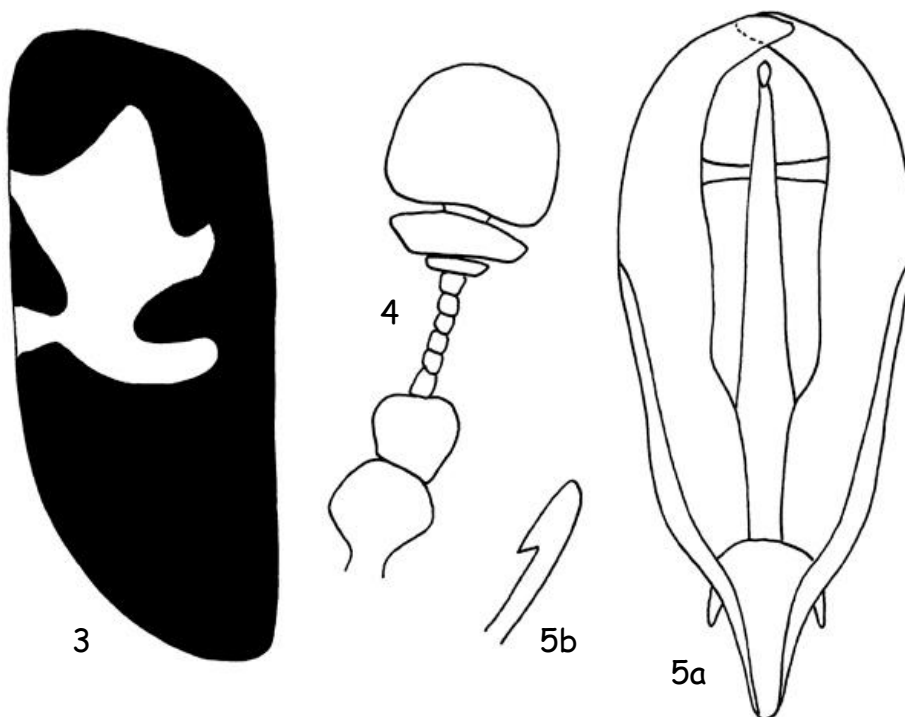
Male. Body parallel and oval, TL 3.1 mm, EW 2.5 mm. Head and pronotum black, shiny, each elytron black with reddish pattern (Fig. 3), black on venter. Head coarsely punctate with long, erect, yellow setation. Palpi brown; setation on mentum denser. Eyes small, with yellow microsetae. Ocellus on front present. Antennae brown with yellow setae, with 11 antennomeres, antennal club with 2 antennomeres, terminal antennal segment circular (Fig. 4). Pronotum black, disc finely punctate, densely foveolate posteriorly, with long, erect, yellow setae. Scutellum black, triangular, without setation. Elytra finely punctate; humerus with one small bump; elytral surface with long, erect yellow setation; cuticle black with reddish pattern (Fig. 3). Epipleuron black, anteriorly broad, finely punctate, with short, yellow setation. Legs dark brown with yellow setation. Mesosternum coarsely punctate laterally, otherwise finely punctate, covered by long, recumbent, yellow setation. Abdominal visible ventrites black, with long, recumbent, yellow setation. Male genitalia (Figs. 5a-b)

Female. Unknown.

Differential diagnosis. The new species differs from other known species according to its characteristic elytral pattern. According to body form is similar to *O. (O.) rihai* sp. nov. but differs from it by the elytral colour pattern, structure of antennae and male genitalia.

Etymology. Patronymy, dedicated to its collector, Pavel Průdek (Brno, Czech Republic).

Distribution. Thailand: Nan province.



Figs. 3-5. - *Orphinus (Orphinus) prudeki* sp. nov.

3. - Elytron. 4. - Antenna of male. 5. - Male genitalia: 5a. - Dorsal view. 5b. - Tip of median lobe.

Orphinus (Orphinus) rihai sp. nov. (Figs. 6-8)

Type material. Holotype (♂): Thailand NE, Loei prov., Phu Kradung N.P., 1300 m, 11-15.V.1999, M. Říha leg., (JHAC). Paratype (1♂): same data as Holotype, (JHAC).

Description.

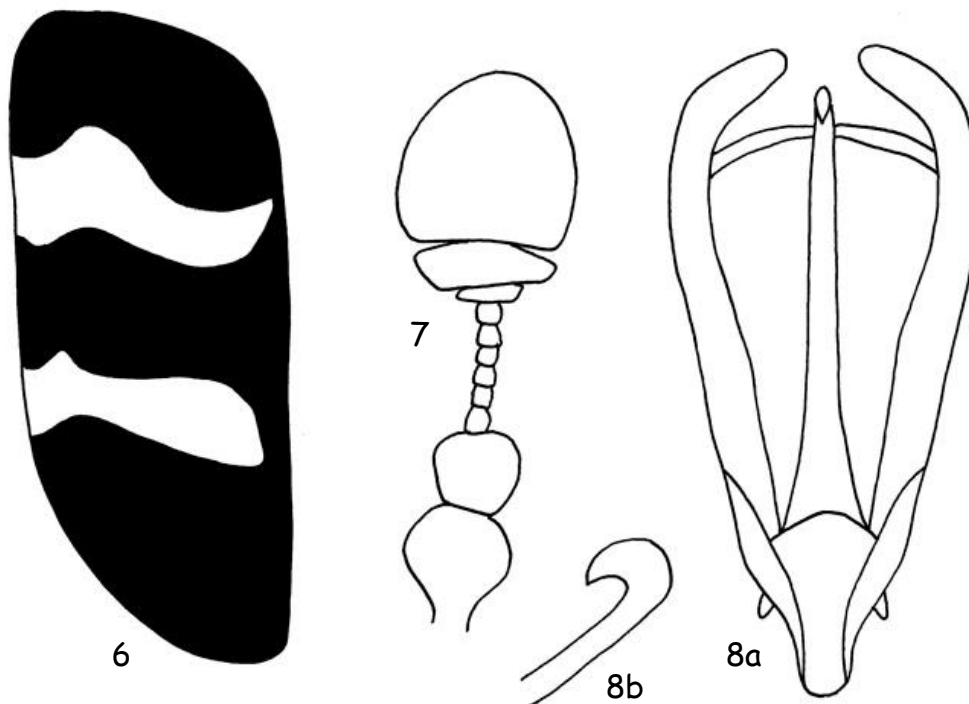
Male. Body parallel and oval, TL 2.8 mm, EW 1.8 mm. Head and pronotum black, shiny, each elytron black with two broad, reddish fasciae (Fig. 6), black on venter. Head coarsely punctate with long, erect, yellow setation. Palpi brown; setation on mentum denser. Eyes small, with yellow microsetae. Ocellus on front present. Antennae brown with yellow setae, with 11 antennomeres, antennal club with 2 antennomeres, terminal antennal segment circular (Fig. 7). Pronotum black, disc finely punctate, densely foveolate posteriorly, with long, erect, yellow setae. Scutellum black, triangular, without setation. Elytra finely punctate; humerus with one small bump; elytral surface with long, erect yellow setation; cuticle black with two broad, reddish fasciae (Fig. 6). Epipleuron black, anteriorly broad, finely punctate, with short, yellow setation. Legs dark brown with yellow setation. Mesosternum coarsely punctate laterally, otherwise finely punctate, covered by long, recumbent, yellow setation. Abdominal visible ventrites black, with long, recumbent, yellow setation. Male genitalia (Figs. 8a-b)

Female. Unknown.

Differential diagnosis. The new species differs from other known species according to characteristic elytral fasciae. According to body form is similar to *O. (O.) prudeki* sp. nov. but differs from it by the elytral colour pattern, structure of antennae and male genitalia.

Etymology. Patronymy, dedicated to its collector, my friend Martin Říha (Brno, Czech Republic).

Distribution. Thailand: Loei province.



Figs. 6-8. - *Orphinus (Orphinus) rihai* sp. nov.
6. - Elytron. **7.** - Antenna of male. **8.** - Male genitalia: **8a.** - Dorsal view. **8b.** - Tip of median lobe.

Acknowledgements

I am very grateful to Jan Schneider (Prague, Czech Republic), Pavel Průdek and Martin Říha (both Brno, Czech Republic) for providing me the interesting material. The research was supported by the Internal Grant Agency (IGA n.20124364), Faculty of Forestry and Wood Sciences, Czech University of Life Sciences (Prague).

References

HÁVA, J. 2012. Contribution to the Dermestidae (Coleoptera) from Naturhistorisches Museum Basel - II. *Orphinus (Orphinus) thailandicus* sp. nov. from Thailand. *Latvijas Entomolgs* **51**: 58-62.

HÁVA, J. 2015. *World Catalogue of Insects. Volume 13. Dermestidae (Coleoptera)*. Leiden/Boston: Brill, xxvi + 419 pp.

HÁVA, J. & KADEJ, M. 2014. *Jiriella brunnea* sp. nov. (Coleoptera: Dermestidae: Megatominae) from Thailand and Burma - the second known species of the genus *Jiriella*. *Journal of Asia-Pacific Entomology* **17**: 799-801.

HERRMANN, A. & HÁVA, J. 2014. A new species of the genus *Orphinus* Motschulsky, 1858 (Coleoptera, Dermestidae, Megatominae) from Thailand. *Arquivos Entomológicos* **12**: 109-111.

KITANO, T. 2013. Description of a new genus *Jiriella* gen. nov. for *Orphinus thailandicus* Háva, 2012 (Coleoptera: Dermestidae: Megatominae). *Studies and Reports, Taxonomical Series* **9**: 477-480.

KITANO, T. & HÁVA, J. 2013. A new species of the genus *Orphinus* Motschulsky from Thailand (Coleoptera: Dermestidae: Megatominae). *Arquivos Entomológicos* **8**: 299-302.